

CaseVisionCamera APP Quick Guide

When using the Casevision Golf App for teaching and training, if you use an iPad (or iPhone) running the app to capture your swing video, you have to place the iPad (or iPhone) in a fixed, suitable location. This means you can't hold the iPad (or iPhone) in your hand or place it anywhere. In this case, you can use another phone or iPad to capture your swing video. The CaseVisionCamera App is designed specifically for this application. It works in conjunction with the Casevision Golf App, providing swing video capture functionality and transmitting the captured swing (or putting) video to the Casevision Golf App. This allows the mobile device (iPad or iPhone) running the Casevision Golf App to move freely.

1. Installation and Connection

First, download the "CaseVisionCamera" app. Download instructions can be found on our website: www.casevisiongolf.com

Then, connect your iPhone or iPad (which will run the CaseVisionCamera app) to iTrack's Wi-Fi hotspot.

Click the app icon to run the CaseVisionCamera app. A device name confirmation prompt will appear; you can change the device name yourself. This device name will be displayed when searching for devices in the camera section of the CaseVisionGolf app's peripheral selection interface.



Figure 2 - Setting Device Name

2. Operation

After confirming the device name, you will enter the CaseVisionCamera interface.

By observing the live video window in the CaseVisionCamera interface, use a tripod to gradually adjust the shooting angle and distance of the iPhone so that the player is within the outline displayed in the image.

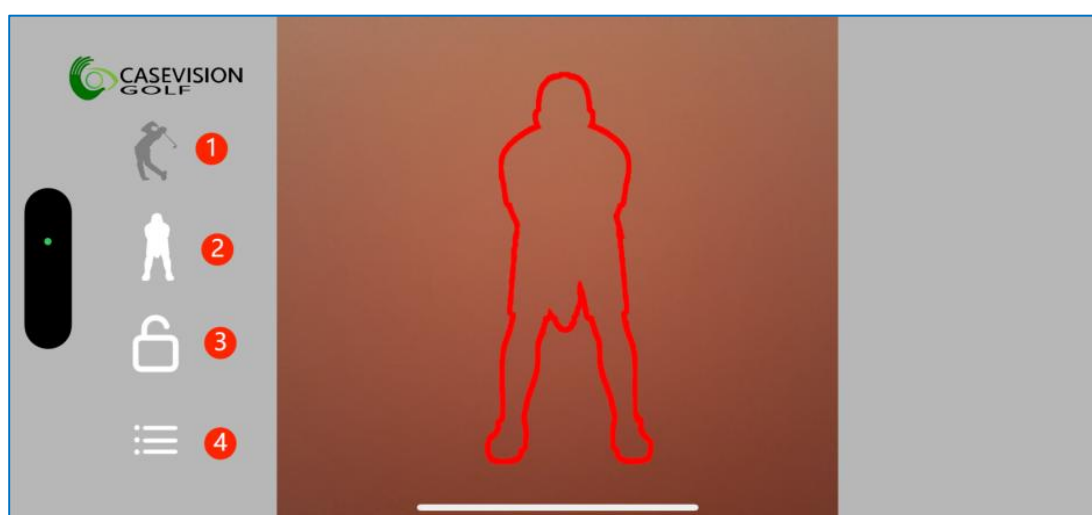


Figure 3 - CaseVisionCamera Interface

The icons in the CaseVisionCamera interface are explained below.

number	icon	description	number	icon	description
--------	------	-------------	--------	------	-------------





1		Connection status	2		Camera position switching
3		Detection lock	4		about

Table iCons Description







The icon  (connection status) is gray when not connected to the CaseVisionGolf APP;  white when connected to CaseVisionGolf, and  green when the CaseVisionGolf APP enters the training interface.



Fig 4: connection status

Click the icon  (camera position switch) to switch between front  and side  views, and synchronize the current location information to the CaseVisionGolf APP.

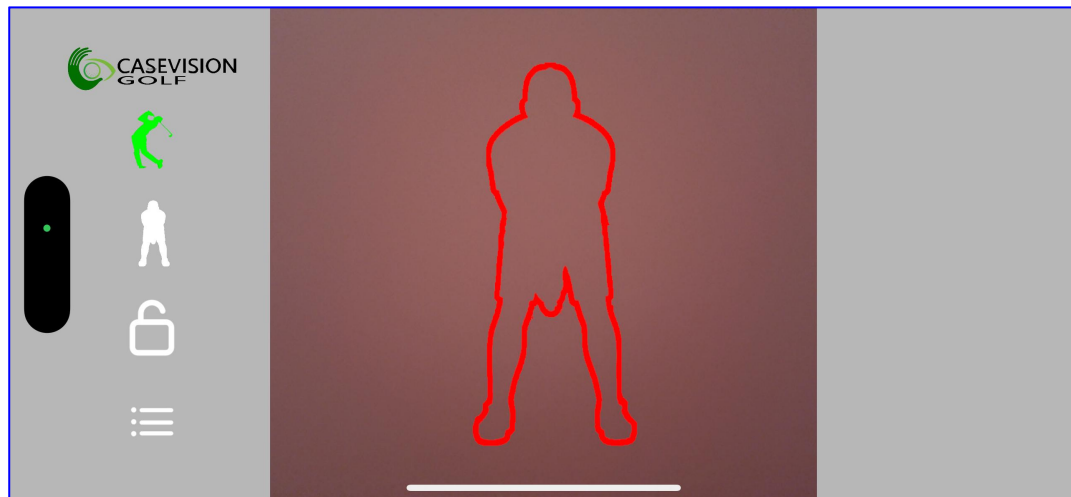


Fig 5: Front View

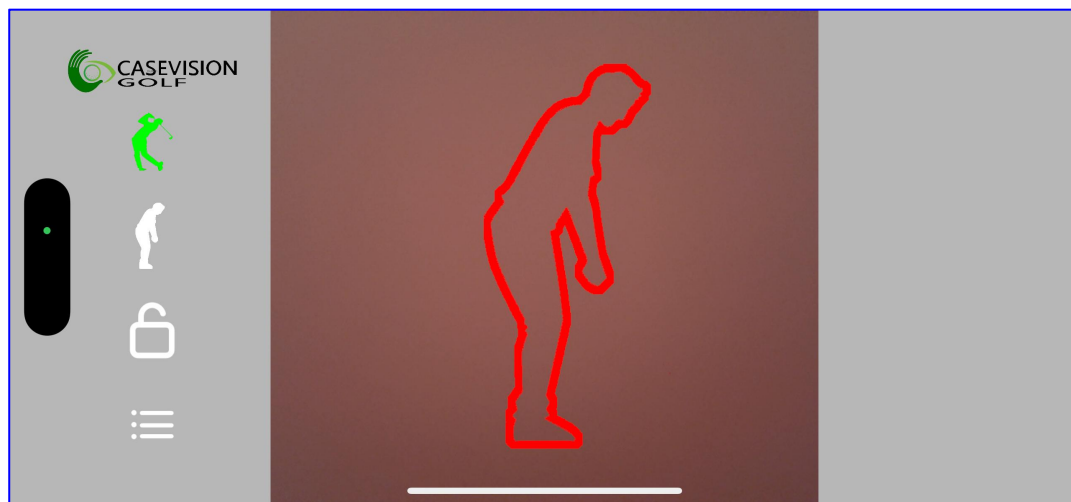





Fig 6: Side View

Click the icon  (Detect Lock) to lock  the swing and prevent swing detection; to unlock  the swing and allow normal swing detection.

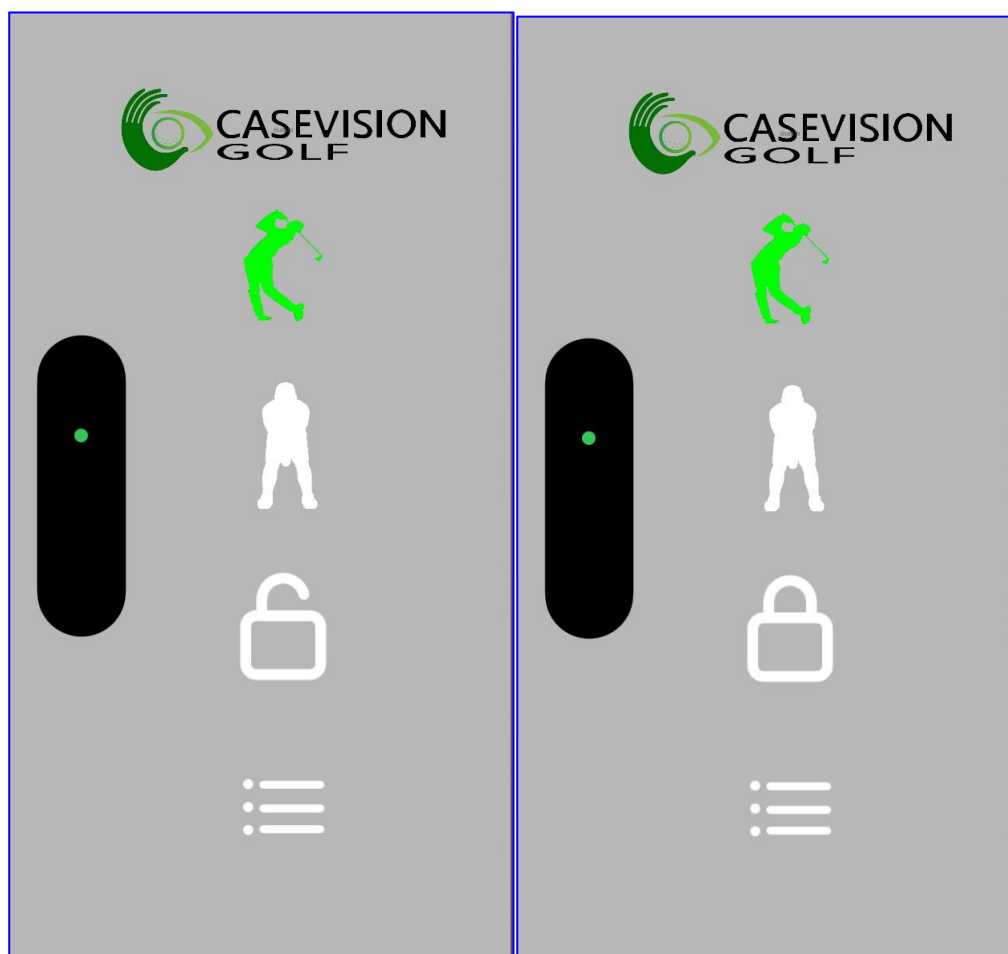


Fig 7: Detect Lock